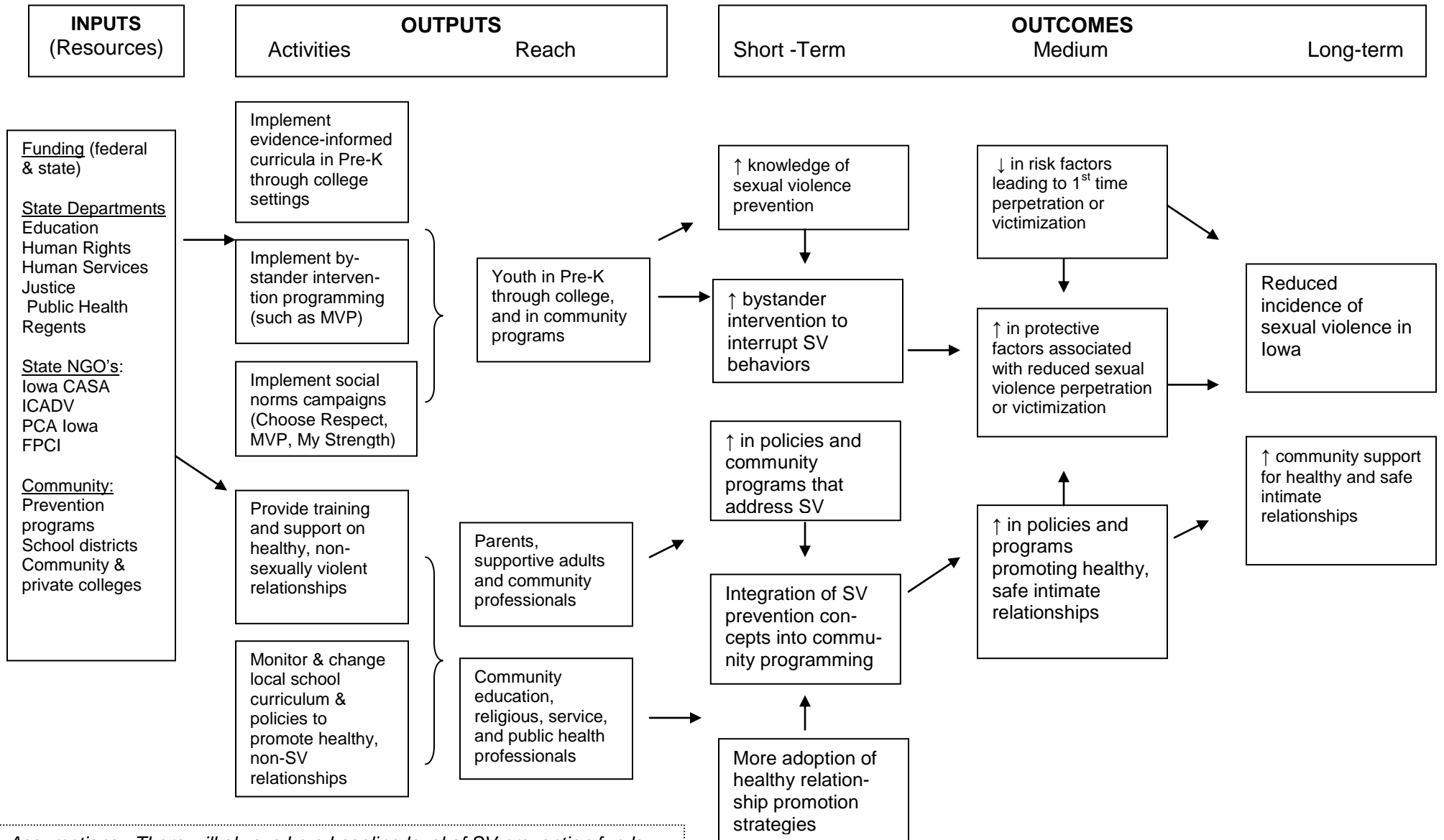


LOGIC MODEL: For Universal Population (pre-K through college) strategies

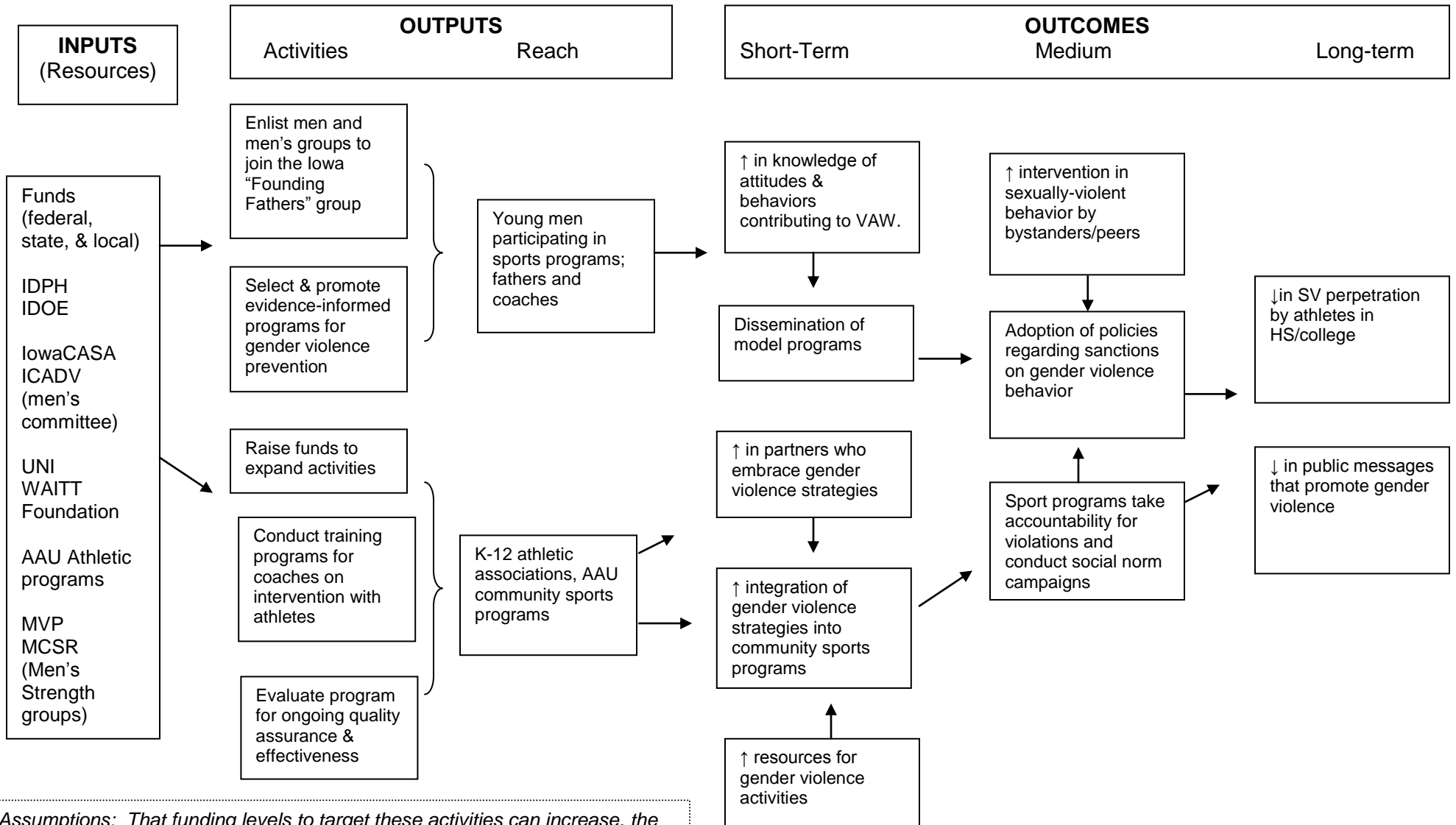
Situation: Since 1 in 10 Iowans (1 in 6 females; 1 in 17 males) will experience sexual victimization in their lifetimes, and two-thirds will occur before the age of 18 – Iowans and communities need to take action to prevent first time perpetration and victimization of sexual violence.



Assumptions: There will always be a baseline level of SV prevention funds; SV prevention "experts" are SA programs in the communities

Logic Model: For Selected Population – Community athletic programs

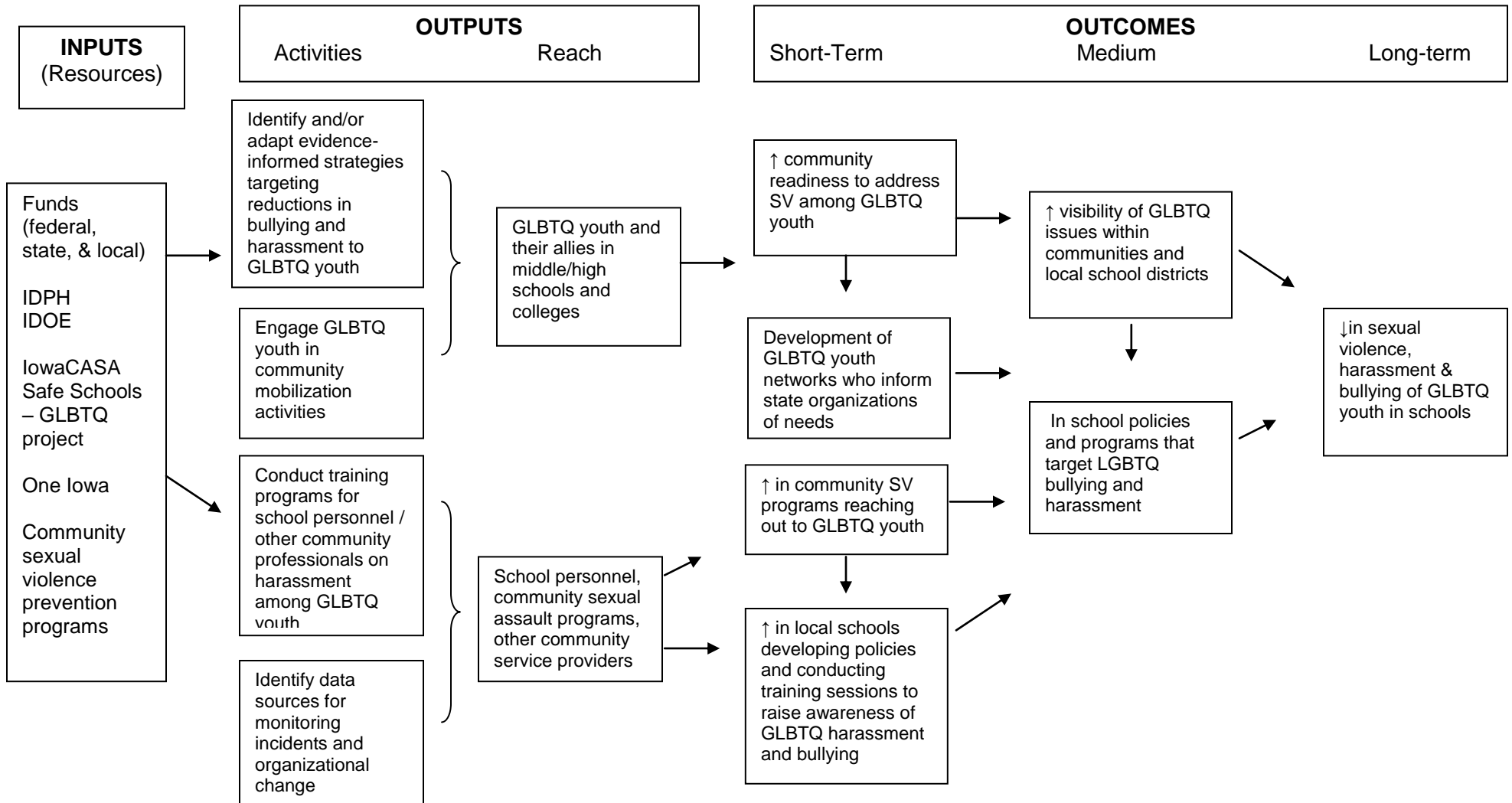
Situation: Individual and social beliefs and values that contribute to gender-based violence are often promoted through athletic training programs for men and boys. This may be modeled by the coaches, both in school-based programs and community-based settings.



Assumptions: That funding levels to target these activities can increase, the Gender Violence Institute is established at UNI, and men's committee of ICADV continues its work.

Logic Model: For Selected Population – GLBTQ Youth

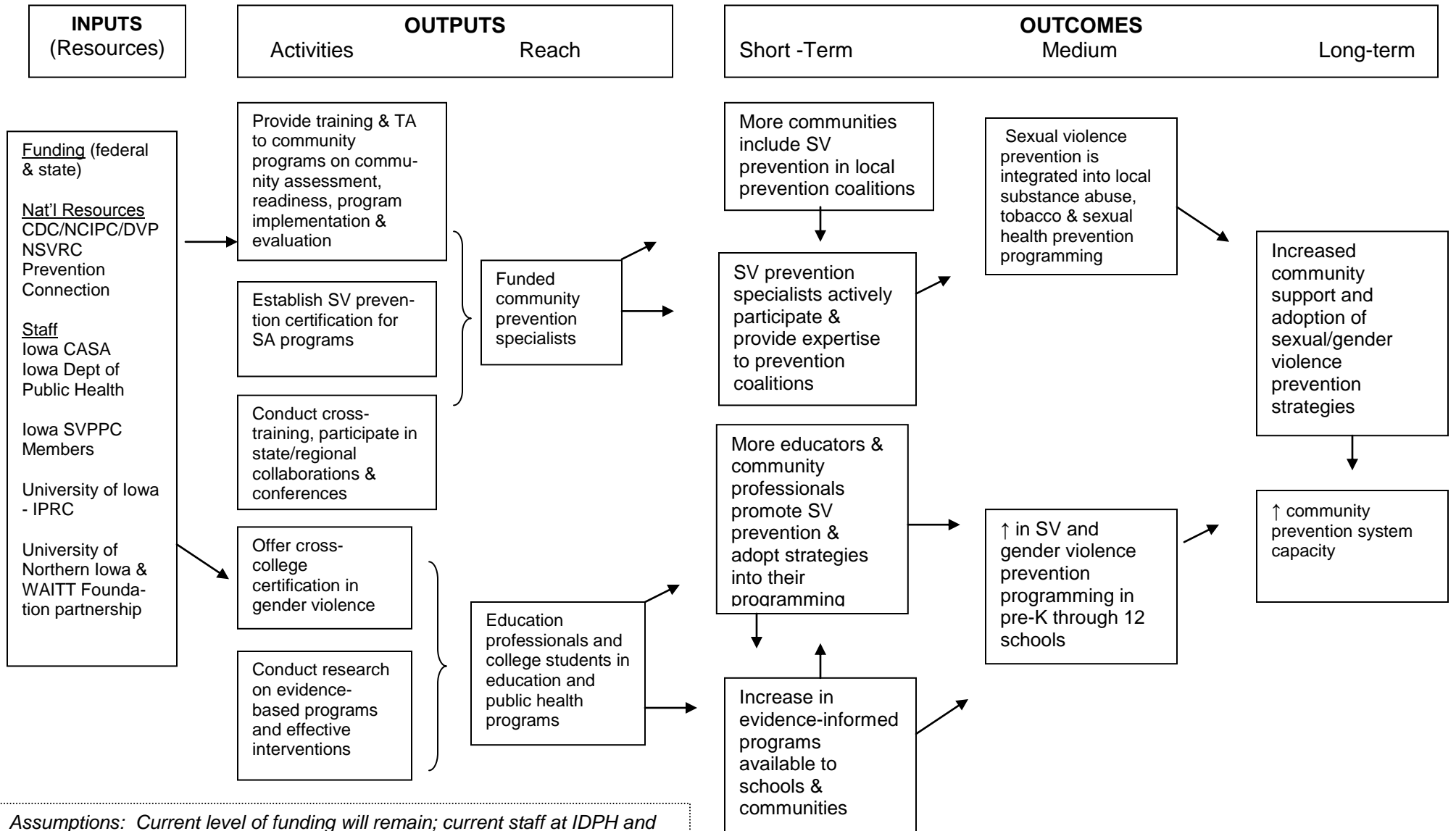
Situation: GLBTQ youth are at greater risk for sexually-directed harassment, bullying and violence. There is a need to provide increased awareness among school administrators and middle/high school populations about the outcomes of this behavior, and to support community-based efforts to reduce it.



Assumptions: That funding levels to target these activities can increase, the Iowa Coalition Against Sexual Assault can maintain current staff levels to conduct training in this area, and community programs continue to receive prevention funds.

LOGIC MODEL: To Increase Prevention System Capacity

Situation: Since funding that targets sexual violence prevention in Iowa is limited (approx. \$1.5 million), state and local prevention partners and program capacity will be expanded to integrate sexual violence prevention into existing community and educational programming.



Assumptions: Current level of funding will remain; current staff at IDPH and IowaCASA will be in place over next 5 years; the proposed Gender Violence Institute is established at UNI